

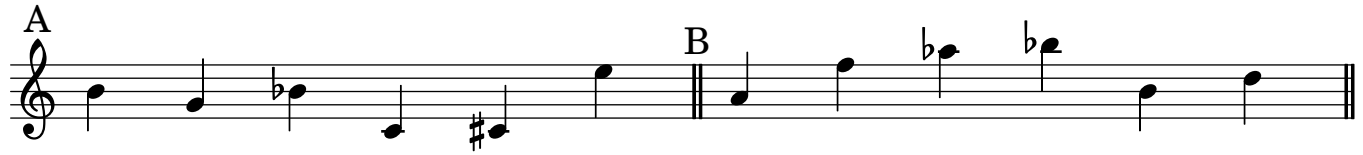
Theory 4

Set Transpositions and Inversions

Name: _____

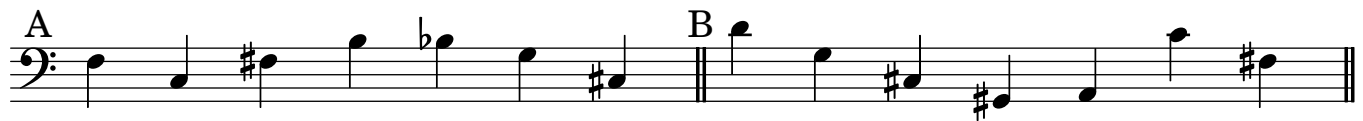
Date: _____

Label the pitch class sets. Then determine which set pairs are transpositions and which are inversions. Write the necessary information in the blanks to indicate their exact relationship.



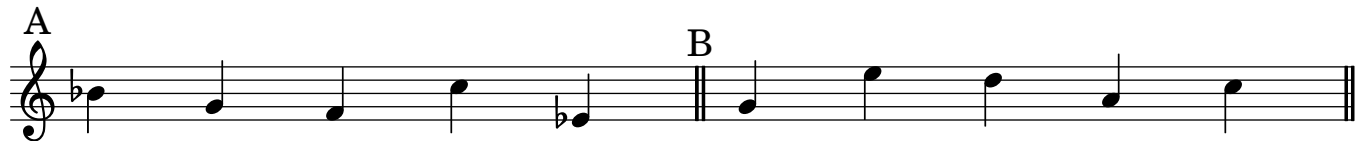
1. Pitch class set A: _____ Pitch class set B: _____

2. $B = T$ _____ A



3. Pitch class set A: _____ Pitch class set B: _____

4. $B = T$ _____ A



5. Pitch class set A: _____ Pitch class set B: _____

6. $B = T$ _____ A